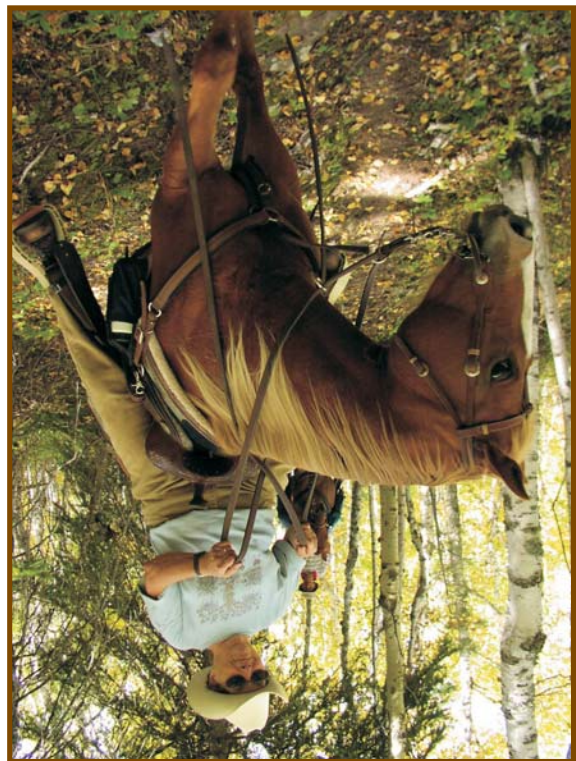


## Trail Highlights



This rugged but serene country is ideal for horseback riding. The secluded trails provide one of the most primitive recreational opportunities in the Black Hills. Water for horses is normally available along many of the trails.

The Sundance Trailhead/Campground offers many amenities for the equestrian enthusiast including drinking water, horse corrals, restrooms, and campsites. Remember that all hay brought onto National Forest System lands must be certified weed free.

## Trail Descriptions

### Carson Draw Trails

**Elevation:** 5,400 to 6,200 feet  
**Length:** 6.8 miles total  
**Difficulty:** Moderate  
**Location:** From Sundance take Highway 14 west one mile to FSR 838. Travel north on FSR 838 two miles to the trailhead.

The Carson Draw Trails are four-season, non-motorized trails that wind through Carson Draw. They are "off the beaten path" and offer solitude to those searching for a more primitive trail experience. Pine, aspen, and oak surround the trails and provide habitat for the abundant wildlife in the area.

Cross-country skiers have become major users for the area's winter activities. They find smooth, fast, and fairly steep descents as well as tranquil level stretches. The Forest Service groom a five-mile loop of the Carson Draw Trail System when conditions are favorable.

From spring to fall, the trails are busy with hikers, mountain bikers, and horse riders. The trails are a pleasant diversion into the peaceful backwoods. Users may find that the trails are much like the Sundance system in their beauty and serenity and offer an even greater level of solitude.

### Sundance Trails

**Elevation:** 4,600 to 6,200 feet  
**Length:** 47.3 miles total  
**Difficulty:** Moderate to Difficult  
**Location:** From Sundance take County Road 123 north 3.5 miles to the trailhead.

This trail system weaves through the network of densely-forested canyons and winding open ridges that form the Bearlodge Mountains. From some ridge tops you can see such sites as the Custer Expedition Route, Devil's Tower, and the Twin Missouri Buttes. Elk, deer, and turkey are among some of the abundant wildlife.

The Sundance Trails system is well-recognized for excellent mountain biking because of the rough topography. Be sure to look for bypasses designed specifically for more challenging mountain biking, especially South Fork Tent and Edge Trails. Other area attractions include Devil's Tower, Inyan Kara Mountain, and Warren Peak Fire Lookout tower.

# Sundance & Carson Draw Trails

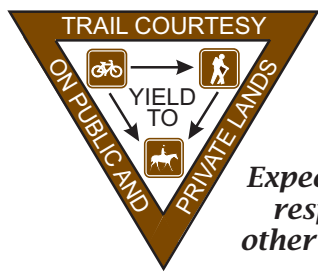
## Trail Numbers 87 & 93



## General Information

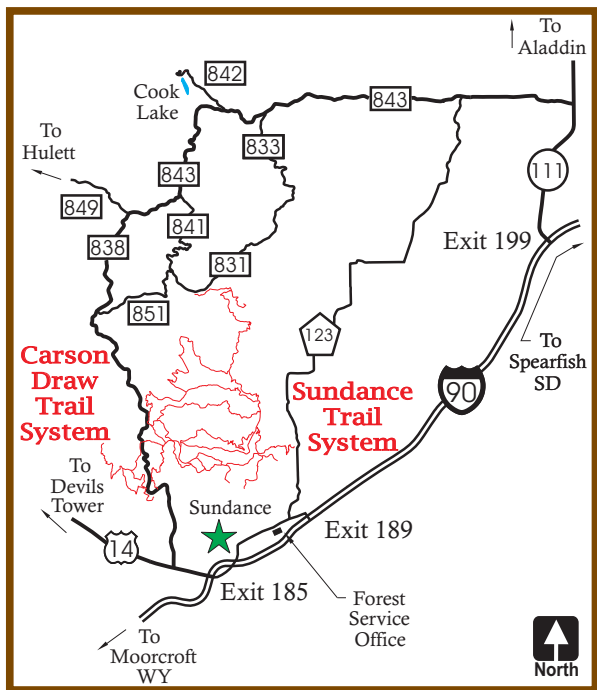
## Location Map

- Trail Ethics**  
Please do not cut across switchbacks or pioneer new trails.
- Extreme Weather**  
Clear, sunny days can quickly turn into afternoon thunderstorms. Start trips early in the day and carry raingear.
- Stream and Spring Water**  
Do not drink it! Each trail user should carry at least one quart of water.
- Fire Safety**  
The State of Wyoming allows open fires only if they are contained and not left unattended. Be sure that the fire is completely extinguished before leaving. Check with the local Forest Service Office for fire restrictions.
- Motors and Machines**  
This trail is not maintained for the use of motorized vehicle traffic.



Expect and respect other users.

Enjoy the National Forest, but please TREAD LIGHTLY and DON'T LITTER.



**Bearlodge Ranger District**  
 121 South 21st Street  
 PO Box 680  
 Sundance, WY 82729-0680  
 (307) 283-1361

**Supervisor's Office**  
 1019 N. 5th Street  
 Custer, SD 57730  
 (605) 673-9200  
 TTY (605) 673-9227

[www.fs.fed.us/r2/blackhills](http://www.fs.fed.us/r2/blackhills)

The United States Department of Agriculture (USDA) prohibits discrimination in its programs on the basis of race, color, national origin, gender, religion, age, disability, political beliefs, sexual orientation, and marital or family status. (Not all prohibited bases apply to all programs.) Persons with disabilities who require alternative means for communication of program information (Braille, large print, audiotape, etc.) should contact USDA's TARGET Center at (202) 720-2600 (voice and TDD).

To file a complaint of program discrimination, write USDA Director, Office of Civil Rights, Room 326-W, Whitten Building, 14th and Independence Avenue, SW, Washington, DC 20250-9410, or call (202) 720-5964 (voice and TDD). USDA is an equal opportunity provider and employer.

Black Hills National Forest



# Individual Trail Information

# Trail History

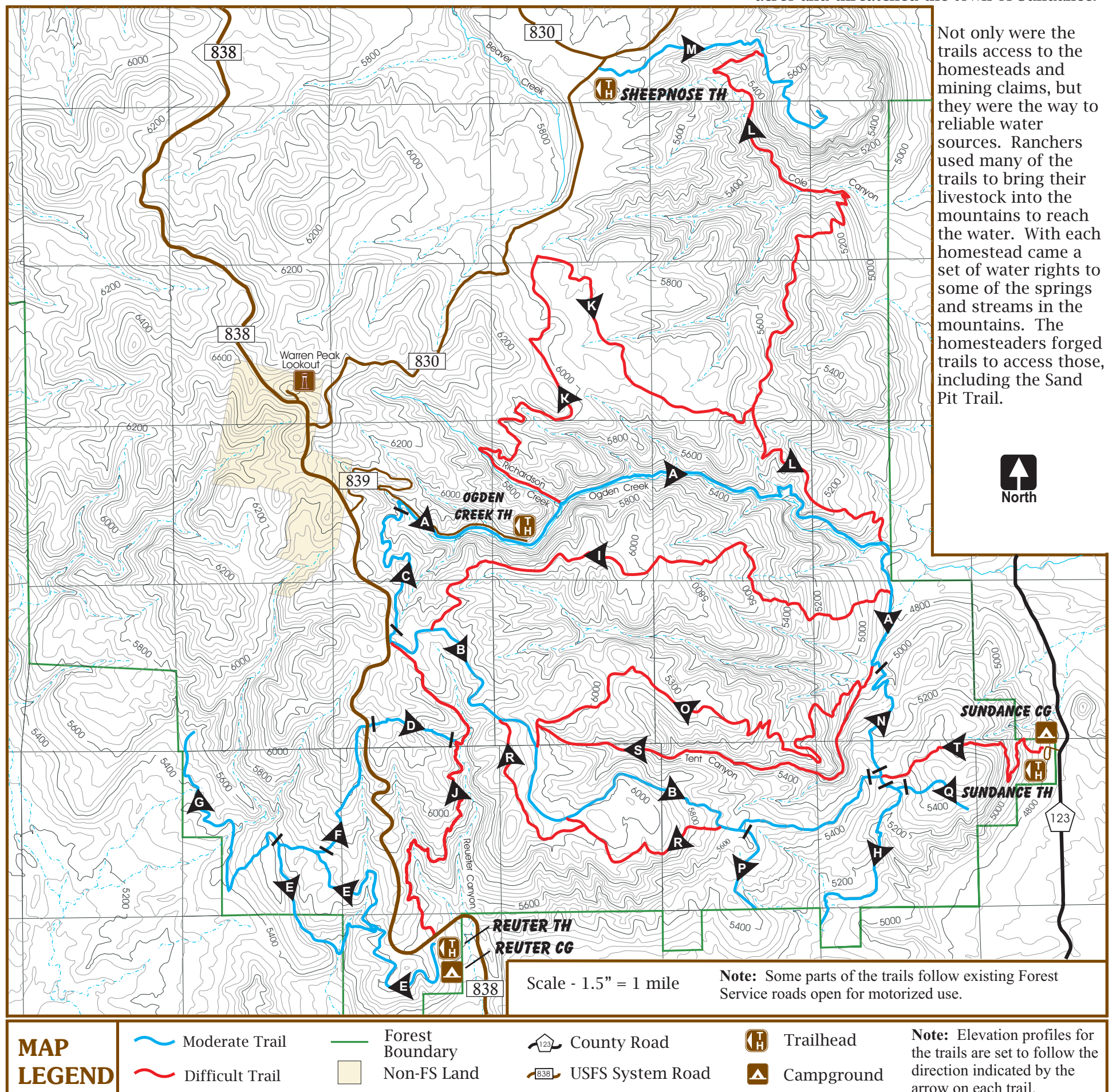
Trail Name	Length	Elevation Points			Elevation Profile
		Start	Peak	End	
Ogden Creek <b>A</b>	4.8 miles	5,985	5,985	4,898	
Sand Pit <b>B</b>	4.8 miles	6,370	6,370	5,347	
Upper Ogden <b>C</b>	1.5 miles	6,360	6,360	5,981	
Carson Cut-Across <b>D</b>	0.7 mile	6,222	6,313	6,000	
Carson Draw <b>E</b>	3.8 miles	5,480	5,688	5,583	
Carson Draw Spur 1 <b>F</b>	1.0 mile	5,596	5,596	5,500	
Carson Draw Spur 2 <b>G</b>	2.0 miles	5,680	6,213	6,213	
East Fork Quarry <b>H</b>	1.2 miles	5,348	5,348	5,133	
Ogden Ridge <b>I</b>	4.3 miles	4,860	6,305	6,305	
Reuter Springs <b>J</b>	3.0 miles	5,471	6,367	6,367	
Richardson Fire <b>K</b>	5.2 miles	5,620	6,087	5,723	
Sheepnose <b>L</b>	5.8 miles	4,890	5,715	5,570	
Sheepnose Mountain <b>M</b>	2.3 miles	5,826	5,826	5,570	
Tent Canyon <b>N</b>	1.5 miles	5,353	5,353	4,900	
Tent Canyon Ridge <b>O</b>	4.1 miles	4,890	6,057	6,057	
West Fork Quarry <b>P</b>	0.5 mile	5,587	5,587	5,391	
Whitetail <b>Q</b>	0.5 mile	5,308	5,491	5,224	
Edge <b>R</b>	2.6 miles	5,676	6,184	6,127	
South Fork <b>S</b> *	2.8 miles	5,010	6,033	6,033	
Sundance <b>T</b>	1.9 miles	4,816	5,455	5,348	

The Carson Draw and Sundance Trails have been developed to provide the recreationist with the opportunity to enjoy the Wyoming Black Hills. However, parts of the trail system have existed since the 1800s. They were the routes to reliable water, the only access to some parts of the mountains, and a key part of the rich mining history of the Bearlodge Mountains.

In the late 1800s and early 1900s, miners and homesteaders made their way into the Bearlodge Mountains and settled. Three of the trails have been named for some of those first families: the Carsons, Ogdens, and Reuters. The Ogdens had settled in the mouth of what is now Ogden Canyon in 1881. In 1893, a German immigrant, Emil Reuter, also made his way into the canyon to spend the rest of his life prospecting. The miner loved the Bearlodge Mountains so much that he never left them in the 32 years before his death. He was buried in the heart of the Bearlodge Mountains, and his grave can still be found to this day along the Ogden Canyon Road, Forest System Road (FSR) 839.

As trail users wander through the southern Bearlodge Mountains, they might notice old fire scars. They are remnants of the great Sundance Fire of 1936 that burned 8,200 acres and threatened the town of Sundance.

\* Trail not recommended for horse users due to terrain, slope and/or difficulty.



Not only were the trails access to the homesteads and mining claims, but they were the way to reliable water sources. Ranchers used many of the trails to bring their livestock into the mountains to reach the water. With each homestead came a set of water rights to some of the springs and streams in the mountains. The homesteaders forged trails to access those, including the Sand Pit Trail.

<b>MAP LEGEND</b>	Moderate Trail	Forest Boundary	County Road	Trailhead	<b>Note:</b> Elevation profiles for the trails are set to follow the direction indicated by the arrow on each trail.
	Difficult Trail	Non-FS Land	USFS System Road	Campground	