

# BLACK HILLS NORTHEAST WYOMING

This trail system is maintained through cooperative efforts of the Wyoming Department of State Parks & Cultural Resources, Division of State Parks, Historic Sites & Trails; the U.S. Forest Service and South Dakota Department of Game, Fish and Parks.

Forty miles of groomed trail connecting to the Black Hills system in South Dakota. Facilities and services available along the trail and in Sundance and Newcastle, Wyoming are available at Danton's Lodge and Trailhead Lodge. Expect snow depths from 1 foot to 4 feet.

Elevations 5,000 feet to 7,000 feet  
Opening Season: Mid-December through Mid-March, depending on snow conditions and funding/season temperatures: -40° F to -20° F

**TOTAL MILES: 40**  
Connects with South Dakota's 295 mile Black Hills Trail System

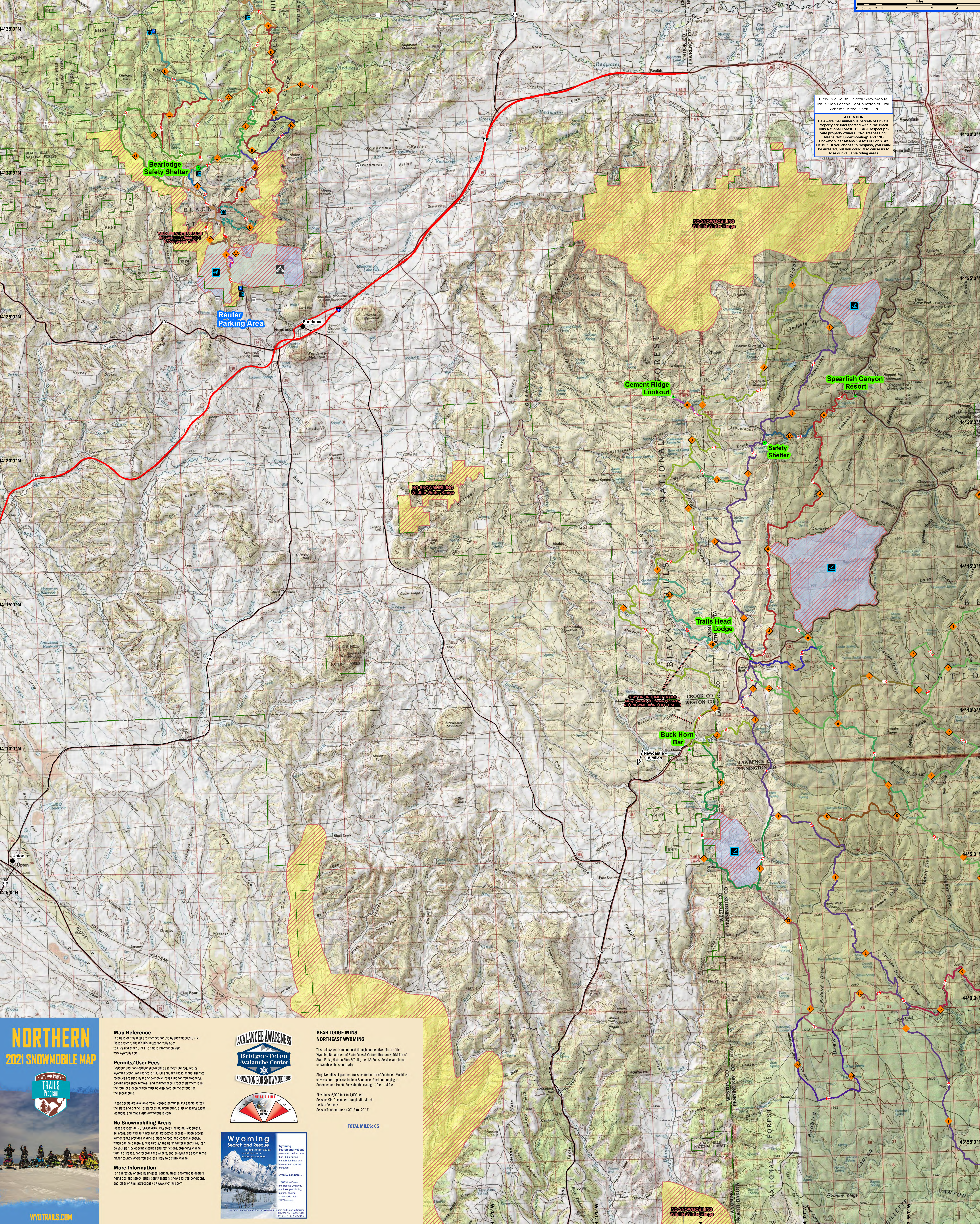


### Legend

- On-Trail Business or other point
- Parking Area
- City/Town
- Safety Shelter
- Groomed Trail
- Un-groomed Trail
- Interstate Highway
- State or Federal Highway
- County Road
- Forest Boundary
- No Snowmobiling
- No Snowmobiling - Wildlife Winter Range
- No Snowmobiling - Wilderness Area
- Non-motorized Recreation Area
- Trail Length (Miles)

Pick-up a South Dakota Snowmobile Trails Map For the Continuation of Trail Systems in the Black Hills

**ATTENTION**  
Be Aware that numerous parcels of Private Property are interspersed within the Black Hills National Forest. PLEASE respect private property owners. "No Trespassing" Means "NO Snowmobiling" and "NO Snowmobilers" Means "STAY OUT or STAY HOME". If you choose to trespass, you could be arrested, but you could also cause us to lose our valuable riding areas.



## NORTHERN 2021 SNOWMOBILE MAP

WYOMING  
TRAILS  
PROGRAM

**Map Reference**  
The Trails on this map are intended for use by snowmobilers ONLY. Please refer to the WY 090 maps for trails open to ATV's and other ORV's. For more information visit [www.wytrails.com](http://www.wytrails.com)

**Permits/User Fees**  
Resident and non-resident snowmobile user fees are required by Wyoming State Law. The fee is \$30.00 annually. These annual user fee revenues are used by the Snowmobile Trails Fund for trail grooming, parking area snow removal, and maintenance. Proof of payment is in the form of a decal which must be displayed on the exterior of the snowmobile.

These decals are available from licensed permit selling agents across the state and online. For purchasing information, a list of selling agent locations, and maps visit [www.wytrails.com](http://www.wytrails.com)

**No Snowmobiling Areas**  
Please respect all NO SNOWMOBILING areas including Wildlands, 5K areas, and wildlife winter range. Respectful access - Open access. Winter range provides wildlife a place to feed and conserve energy, which can help them survive through the harsh winter months. You can do your part by obeying closures and restrictions, observing wildlife from a distance, not following the wildlife, and engaging the snow in the better country where you are less likely to disturb wildlife.

**More Information**  
For a directory of area businesses, parking areas, snowmobile dealers, riding tips and safety issues, safety practices, snow and trail conditions, and other trail attractions visit [www.wytrails.com](http://www.wytrails.com)

### Map Reference

The Trails on this map are intended for use by snowmobilers ONLY. Please refer to the WY 090 maps for trails open to ATV's and other ORV's. For more information visit [www.wytrails.com](http://www.wytrails.com)

### Permits/User Fees

Resident and non-resident snowmobile user fees are required by Wyoming State Law. The fee is \$30.00 annually. These annual user fee revenues are used by the Snowmobile Trails Fund for trail grooming, parking area snow removal, and maintenance. Proof of payment is in the form of a decal which must be displayed on the exterior of the snowmobile.

These decals are available from licensed permit selling agents across the state and online. For purchasing information, a list of selling agent locations, and maps visit [www.wytrails.com](http://www.wytrails.com)

### No Snowmobiling Areas

Please respect all NO SNOWMOBILING areas including Wildlands, 5K areas, and wildlife winter range. Respectful access - Open access. Winter range provides wildlife a place to feed and conserve energy, which can help them survive through the harsh winter months. You can do your part by obeying closures and restrictions, observing wildlife from a distance, not following the wildlife, and engaging the snow in the better country where you are less likely to disturb wildlife.

### More Information

For a directory of area businesses, parking areas, snowmobile dealers, riding tips and safety issues, safety practices, snow and trail conditions, and other trail attractions visit [www.wytrails.com](http://www.wytrails.com)

### BEAR LODGE MNS NORTHEAST WYOMING

This trail system is maintained through cooperative efforts of the Wyoming Department of State Parks & Cultural Resources, Division of State Parks, Historic Sites & Trails, the U.S. Forest Service, and local snowmobile clubs and trails.

Sixty-five miles of groomed trails located north of Sundance. Machine services and repair available in Sundance, Lead and Lodge in Sundance and Juliet. Snow depths average 1 foot to 4 feet.

Elevations: 5,000 feet to 7,000 feet  
Season: Mid-December through Mid-March;  
peak in February  
Season temperatures: -40° F to -20° F

**TOTAL MILES: 65**

### Wyoming Search and Rescue

The first person to locate a missing snowmobiler.

Wyoming Search and Rescue provides search and rescue services for snowmobilers and other winter recreationists. Even if you can help...

Donate to Search and Rescue. Your donation will help purchase equipment, fuel, and other supplies. Even if you can help...

Donate to Search and Rescue. Your donation will help purchase equipment, fuel, and other supplies. Even if you can help...